

Getting Started

Review the steps to integrate Vault into your app

Enable the service and create a token

When you enable the Vault service, you will also create a token.

1. Click **Vault** on the left-hand navigation. A dialog with details about Vault will appear. Click **Next**.
2. You'll be promoted to create a token to access the Vault service. Click **Next**.
3. An additional dialog with token details will appear. Enter a Token name and select an Expiration Date, or just keep the default values. Click **Done**.

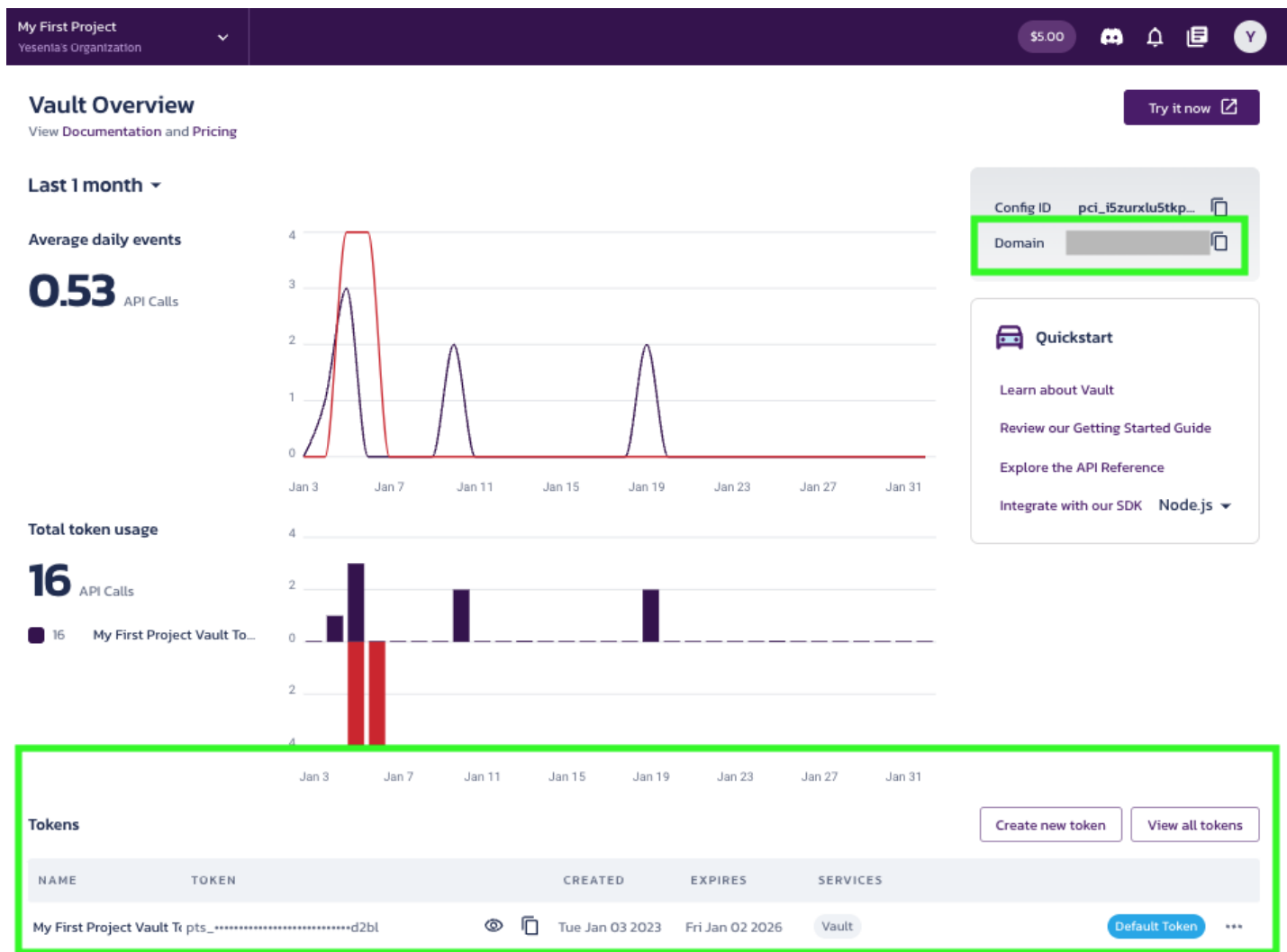
The Vault Overview page should appear.

Configure your app for communication with the Pangea service

For your app to communicate with the Pangea service, you must set the following environment variables:

- `token`
- `domain`

All of these variables are created when you enable Vault and can be found in the **Overview** section under **Vault**.



Set environment variables

To set each variable in bash:

```
export PANGEA_DOMAIN="yourServiceDomain"
```

```
export VAULT_AUTH_TOKEN="yourAccessToken"
```

Make a POST call to create key

Use the create endpoint to generate a key.

```
curl -sSLX POST 'https://vault.$PANGEA_DOMAIN/v1/key/generate' \  
-H 'Authorization: Bearer VAULT_AUTH_TOKEN' \  
-H 'Content-Type: application/json' \  
-d '{"type": "asymmetric_key", "algorithm": "ed25519", "name": "my first key"}'
```

Receive a response

```
{  
  "request_id": "prq_x6fdiizbon6j3bsdvnpmwxs2aan7fqd",  
  "request_time": "2022-09-21T17:24:33.105Z",  
  "response_time": "2022-09-21T17:24:34.007Z",  
  "status": "success",  
  "summary": "Key pair created",  
  "result": {  
    "algorithm": "ed25519",  
    "id": "pvi_gic7ev4a5weavkfrnkzscitevzgghfyk4",  
    "public_key": "...",  
    "type": "asymmetric_key",  
    "version": 1  
  }  
}
```

In this instance, a key was created and the `status` of the response indicates it was a `success`.

Test the service

The interactive [Vault API Reference](#) allows you to test API endpoints from the documentation. This is an easy way to play around with different endpoints and see what they return.

Share your implementation

Reach out to the Pangea community on our [Discord](#) to let us know how you've integrated Vault into your application.

Was this article helpful?

 Yes

 No

Contact us 